



Commonwealth of Australia Gazette.

PUBLISHED BY AUTHORITY.

[Registered at the General Post Office, Melbourne, for transmission by post as a newspaper.]

No. 97.]

TUESDAY, 5TH AUGUST.

1919

WAR PRECAUTIONS (PRICES) REGULATIONS 1916.
DETERMINATION OF MAXIMUM PRICES.

ORDER No. 608.

FLOUR.—VICTORIA.

Melbourne, 4th August, 1919.

I, WALTER MASSY GREENE, acting for the Minister of State for Defence, in pursuance of the War Precautions (Prices) Regulations 1916, and on the recommendation of the Chief Commissioner for Prices, do hereby order as follows:—

1. This Order may be cited as Prices Order No. 608, and shall come into force on the 5th day of August, 1919.
2. Prices Order No. 444, made on the 24th September, 1918, is hereby repealed.
3. This Order shall apply to all the proclaimed areas in the State of Victoria specified in the Schedule to this Order.
4. The maximum prices which may be charged for Flour shall, until further order, be as set out in the Schedule to this Order.

W. MASSY GREENE, acting for the Minister of State for Defence.

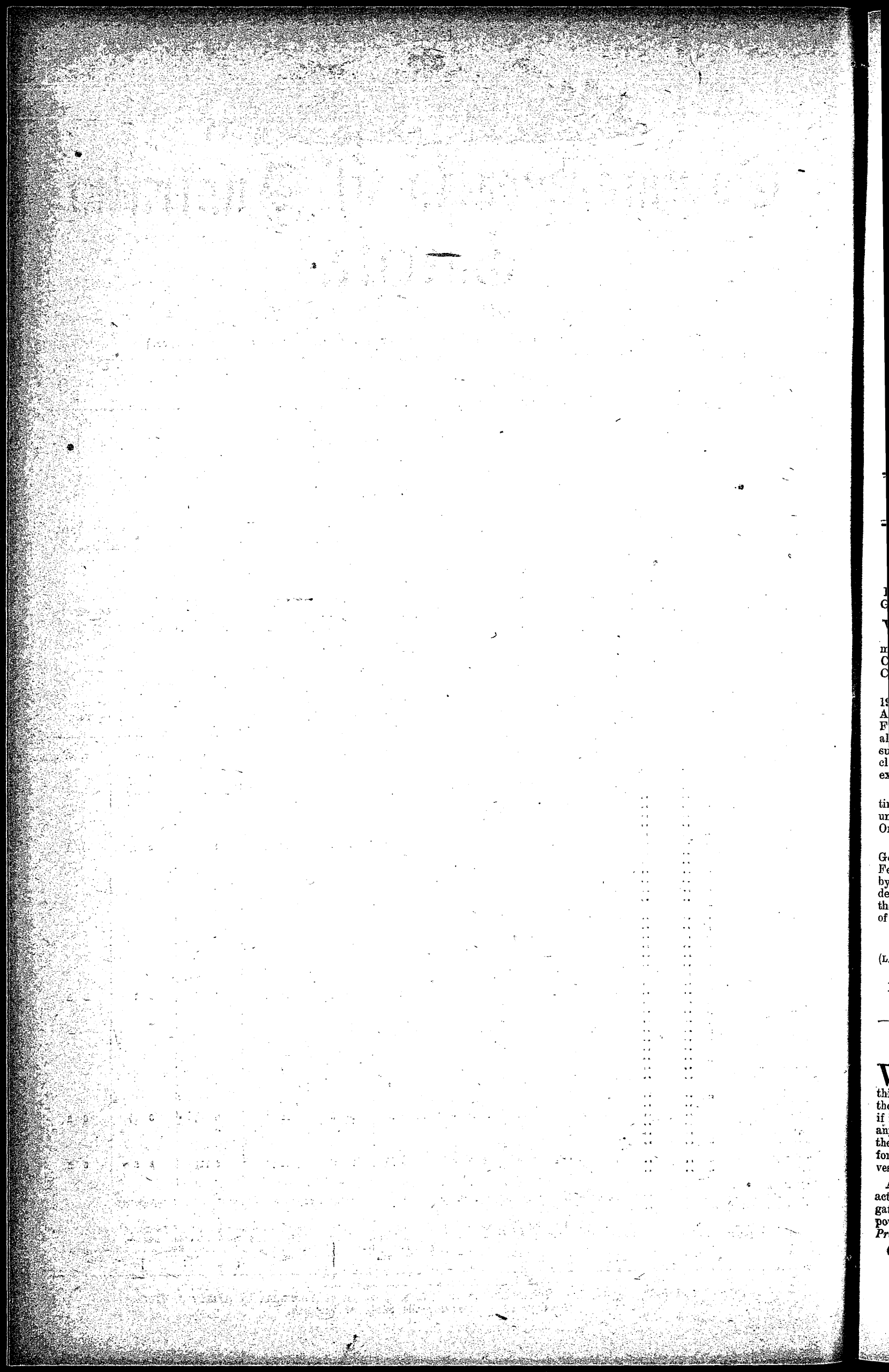
SCHEDULE.

Area.	Wholesale (delivered on Rail or Carts at Mill Door).				Retail Shop Prices for Cash at Shop.				
	Per Ton in 150-lb. Bags.	Per Ton in 100-lb. Bags.	Per Ton in 50-lb. Bags.	Per Ton in 25-lb. Bags.	Per 150-lb. Bag.	Per 100-lb. Bag.	Per 50-lb. Bag.	Per 25-lb. Bag.	Per lb.
Within the Metropolitan area of the State of Victoria	£ s. d.	£ s. d.	£ s. d.	£ s. d.	s. d.	s. d.	s. d.	s. d.	s. d.
Within the proclaimed—									
Geelong area	10 17 6	11 0 0	12 0 0	12 13 4	18 9	12 6	6 10½	3 7½	0 2
Birchip									
Ouyen									
Donald									
Dimboola									
Horsham									
Murtoa	10 10 0	10 12 6	11 12 6	12 5 10	18 2	12 3	6 8	3 6½	0 2
Natimuk									
Nhill									
Rupanyup									
Swan Hill									
Wycheproof									
Warracknabeal									
Benalla									
Bridgewater									
Charlton									
Chiltern									
Cobram									
Dunolly									
Elmore									
Echuca									
Kerang	10 12 6	10 15 0	11 15 0	12 8 4	18 3	12 4	6 8½	3 7	0 2
Numurkah									
Nathalia									
St. Arnaud									
Stawell									
Tarnagulla									
Wahgunyah									
Wangaratta									
Wedderburn									
Yarrawonga									
Bendigo									
Mooroopna									
Smeaton	10 15 0	10 17 6	11 17 6	12 10 10	18 6	12 6	6 9½	3 7½	0 2
Maryborough									
Shepparton									
Tatura									
Kyneton	11 0 0	11 2 6	12 2 6	12 15 10	19 0	12 9	6 11½	3 8	0 2
Sale									
Within all proclaimed areas in the State of Victoria other than those specified above	The prices fixed under this Order for the nearest of the areas specified above, plus actual cost of transportation.								

Two shillings and sixpence per ton may be added to the above-mentioned wholesale prices when the sale of the goods is booked for one or more days.

When any of the above-mentioned goods are booked for seven or more days, the following additions may be made to the retail cash prices:—

150-lb. Bag.	100-lb. Bag.	50-lb. Bag.	25-lb. Bag.
9d.	6d.	4d.	2d.



G
m
C
C
19
A
F
al
su
cl
ex
tin
ur
O
G
Fe
by
de
the
of
(L.
V
thi
the
if
any
the
for
ves
A
act
gat
pow
Pro
C