



Motor Vehicle Standards (Placement of Used Import Plates) Determination 2004 (No.1)

I, IAN CAMPBELL, Minister for Local Government, Territories and Roads, make this Determination under section 13B of the *Motor Vehicle Standards Act 1989*.

Dated 14 July 2004

[signed]

IAN CAMPBELL
Minister for Local Government, Territories and Roads

Contents

	Page
1 Name of Determination	2
2 Commencement	2
3 Revocation of the <i>Motor Vehicle Standards (Placement of Used Import Plates) Determination 2002 (2)</i> .	2
4 Definitions	2
5 Purpose	2
6 Categories of used import plates	3
7 Content, form and function of used import plates	3
8 Manufacture and supply of used import plates	4
9 Placement of used import plates	4
Schedule 1 Used import plates — examples	6
Content and form of used import plates	6

1 Name of Determination

This Determination is the *Motor Vehicle Standards (Placement of Used Import Plates) Determination 2004 (No.1)*.

2 Commencement

This Determination commences on gazettal.

3 Revocation of the *Motor Vehicle Standards (Placement of Used Import Plates) Determination 2002 (2)*.

The *Motor Vehicle Standards (Placement of Used Import Plates) Determination 2002 (2)* is revoked.

Note The *Motor Vehicle Standards (Placement of Used Import Plates) Determination 2002 (2)* was made by the Parliamentary Secretary to the Minister for Transport and Regional Services on 12 December 2002 and notified in the Gazette on 18 December 2002

4 Definitions

(1) In this Determination:

Act means the *Motor Vehicle Standards Act 1989*.

vehicle approval number, for a vehicle, means the number stated on the approval issued to a registered automotive workshop to fit a used import plate to that vehicle.

vehicle identification number, for a vehicle, means a number:

- (a) corresponding to the vehicle identification number of the vehicle; and
- (b) stated on a used import plate that identifies the vehicle.

(2) Unless the contrary intention appears, a word or expression that is used in this Determination and in the *Motor Vehicle Standards Regulations 1989* has the same meaning in this Determination as it has in those Regulations.

Note 1 The following terms are defined in the Act:

- registered automotive workshop
- used import plate
- used imported vehicle.

Note 2 The following terms are defined in the *Motor Vehicle Standards Regulations 1989*:

- RAW approval
- restricted volume two-wheeled or three-wheeled vehicle
- RVCS participant number
- three-wheeled vehicle
- two-wheeled vehicle
- unrestricted volume two-wheeled or three-wheeled vehicle
- vehicle category.

5 Purpose

This Determination sets out procedures and arrangements relating to the placement of used import plates on used imported vehicles.

6 Categories of used import plates

For paragraph 13B (2) (a) of the Act, the following categories of used import plates may be placed on a used imported vehicle by a registered automotive workshop:

- (a) Category A — for used imported vehicles other than two-wheeled and three-wheeled used imported vehicles;
- (b) Category B — for restricted volume two-wheeled and three-wheeled used imported vehicles;
- (c) Category C — for unrestricted volume two-wheeled and three-wheeled used imported vehicles.

7 Content, form and function of used import plates

- (1) The functions of a used import plate are to:
 - (a) indicate to vehicle registration authorities in the States and Territories that the Minister is satisfied that the vehicle meets the requirements of the Act; and
 - (b) indicate that the vehicle has been imported and modified by a registered automotive workshop; and
 - (c) provide information about the vehicle as set out in subsection (2).
- (2) A used import plate must contain the following:
 - (a) a description of the vehicle to which the plate will be affixed;
 - (b) the corporation name or trading name of the registered automotive workshop, as stated on its RAW approval;
 - (c) the date that approval to place the plate was given by the Minister;
 - (d) the number given to the approval to place the plate;
 - (e) the vehicle identification number;
 - (f) the applicant's registered automotive workshop number;
 - (g) the vehicle category;
 - (h) for a category A plate — the seating capacity of the vehicle;
 - (i) for a category A plate, except where the plate is fitted to a vehicle in the MA, MB or MC vehicle category— the Gross Vehicle Mass (*GVM*).

- (3) A used import plate must also comply with the following requirements as to form:
 - (a) the plate must be an adhesive label or metal plate;
 - (b) for a used import plate that is metal — the required information must be stamped in relief (for example, the information must be embossed, indented, etched or engraved);
 - (c) information on the plate must have a minimum character height of 2.5 mm (7 point) with the characters properly aligned;
 - (d) the vehicle identification number must be shown on one line without blank spaces between characters;
 - (e) for a used import plate that is an adhesive label—the vehicle identification number must be displayed in readable text and in a bar code;
 - (f) the plate colour must be Australian Standard AS2700S 1996 Colour Standards for General Purposes — Magenta;
 - (g) the plate must contain a blacklight sensitive image of the Australian Coat of Arms.
- (4) A used import plate that is not approved for placement by the Minister and does not comply with this Determination in respect of the content and form of used import plates, and the manner in which it must be fixed to the relevant used imported vehicle, must not be placed on a vehicle.
- (5) Examples of used import plates and the information they must contain are set out in Schedule 1.

8 Manufacture and supply of used import plates

- (1) A registered automotive workshop must obtain all used import plates from a supplier approved by the Minister.
- (2) A registered automotive workshop, other than one shown on the approval to import, may fit a used import plate to the vehicle, if:
 - (a) the plate is fitted to the vehicle in accordance with the conditions of its RAW approval; and
 - (b) the plate is fitted with the agreement of:
 - (i) the workshop identified in the approval to import; and
 - (ii) the Minister.

9 Placement of used import plates

- (1) A used import plate must be affixed to the body of a used imported vehicle in a position where the plate:
 - (a) may be easily seen; and
 - (b) would be exposed to minimum crash damage, weathering or disfigurement; and
 - (c) would not usually require replacement as a result of a vehicle crash.

-
- (2) Without limiting subsection (1), a used import plate is properly affixed for that subsection if it is affixed to the vehicle as follows:
- (a) for passenger cars and bonneted trucks:
 - (i) on the panel separating the front compartment from the passenger compartment; or
 - (ii) on a front suspension tower; or
 - (iii) on an engine compartment side deck; or
 - (iv) on the boot floor;
 - (b) for cab-over-engine trucks — in the passenger compartment rearward of the driver or passenger door;
 - (c) for forward control passenger vehicles and vans — in the passenger compartment in the front passenger's footwell area;
 - (d) for two-wheeled and three-wheeled vehicles — on the steering head.
- (3) A used import plate must be fixed to a used imported vehicle by:
- (a) for a used import plate that is metal — riveting or welding, or with hammer drive screws; and
 - (b) for a used import plate that is an adhesive label — in accordance with the instructions provided by the plate supplier approved by the Minister.

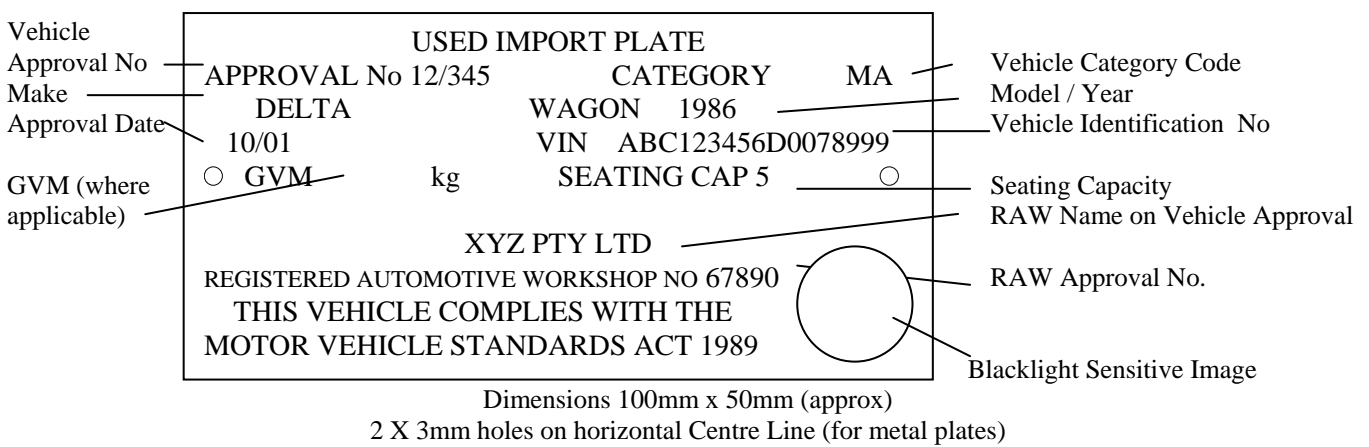
Schedule 1 Used import plates — examples

(subsection 7 (5))

Content and form of used import plates

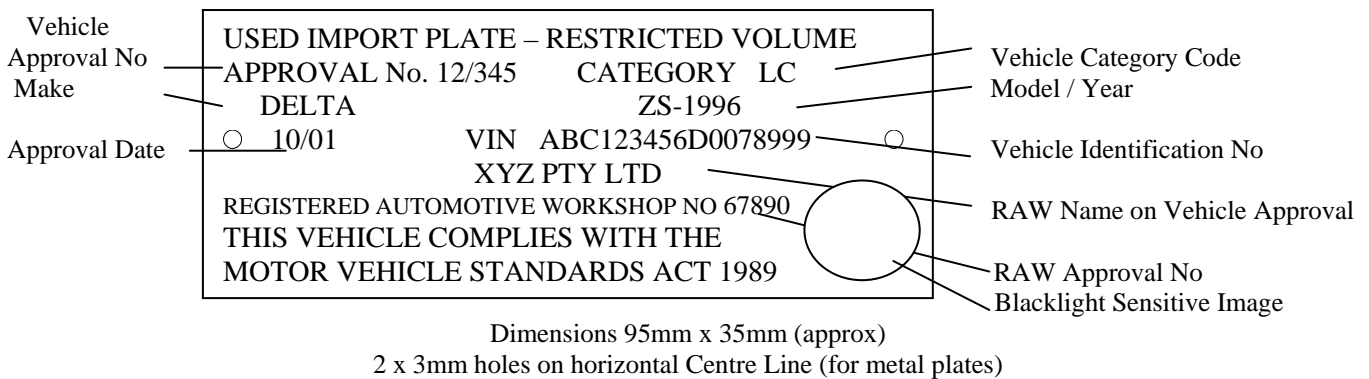
Category A plate

For use on vehicles, other than two-wheeled and three-wheeled vehicles.



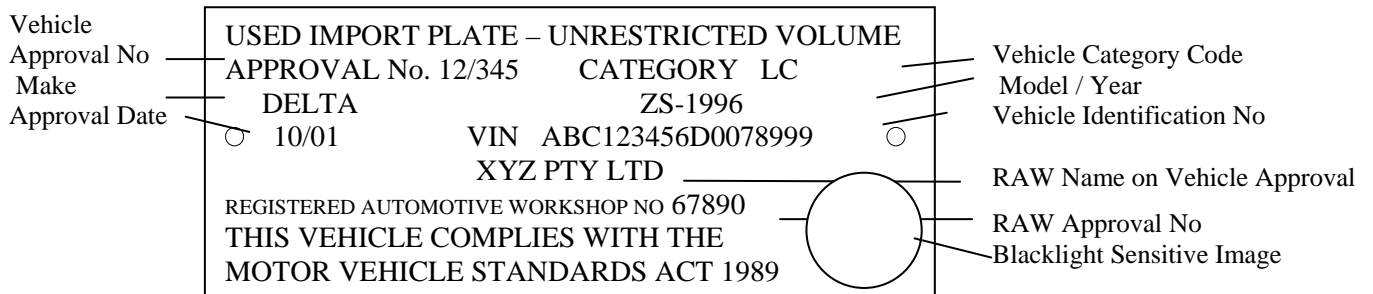
Category B plate

For use on restricted volume two-wheeled and three-wheeled vehicles



Category C plate

For use on unrestricted volume two-wheeled and three-wheeled vehicles



Dimensions 95mm x 35mm (approx)
2 x 3mm holes on horizontal Centre Line (for metal plates)