



Australian Government
Department of Home Affairs



CYBER AND
INFRASTRUCTURE SECURITY
CENTRE

NTC-24671

Maritime Transport and Offshore Facilities Security Act 2003

NTC-24671 - DECLARATION OF SECURITY REGULATED PORT – PORT OF FREMANTLE

I am a Delegate of the Secretary of the Department of Home Affairs. Under subsection 13(1) of the *Maritime Transport and Offshore Facilities Security Act 2003* (the Act), I:

REVOKE Notice NTC-16697 which declared the Port of Fremantle as a security regulated port as published in the *Gazette* (C2019G00830, 12 September 2019); and

DECLARE that the area of the port of Port of Fremantle intended for use either wholly or partly in connection with the movement, loading, unloading, maintenance or provisioning of security regulated ships, the boundaries of which are shown on the attached maps (Sheet 1 to Sheet 10), to be a security regulated port.

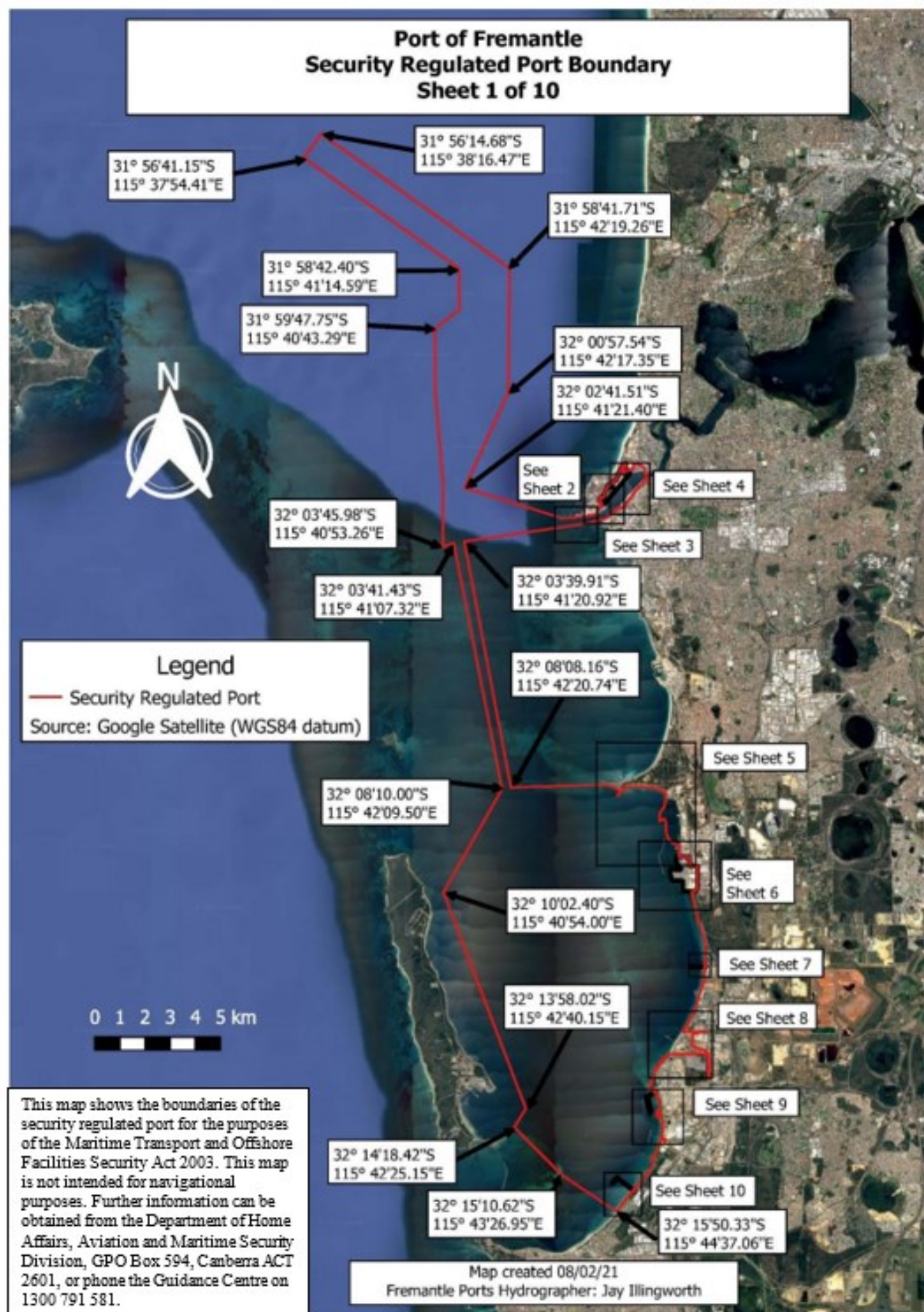
This Notice commences upon publication in the *Gazette*.

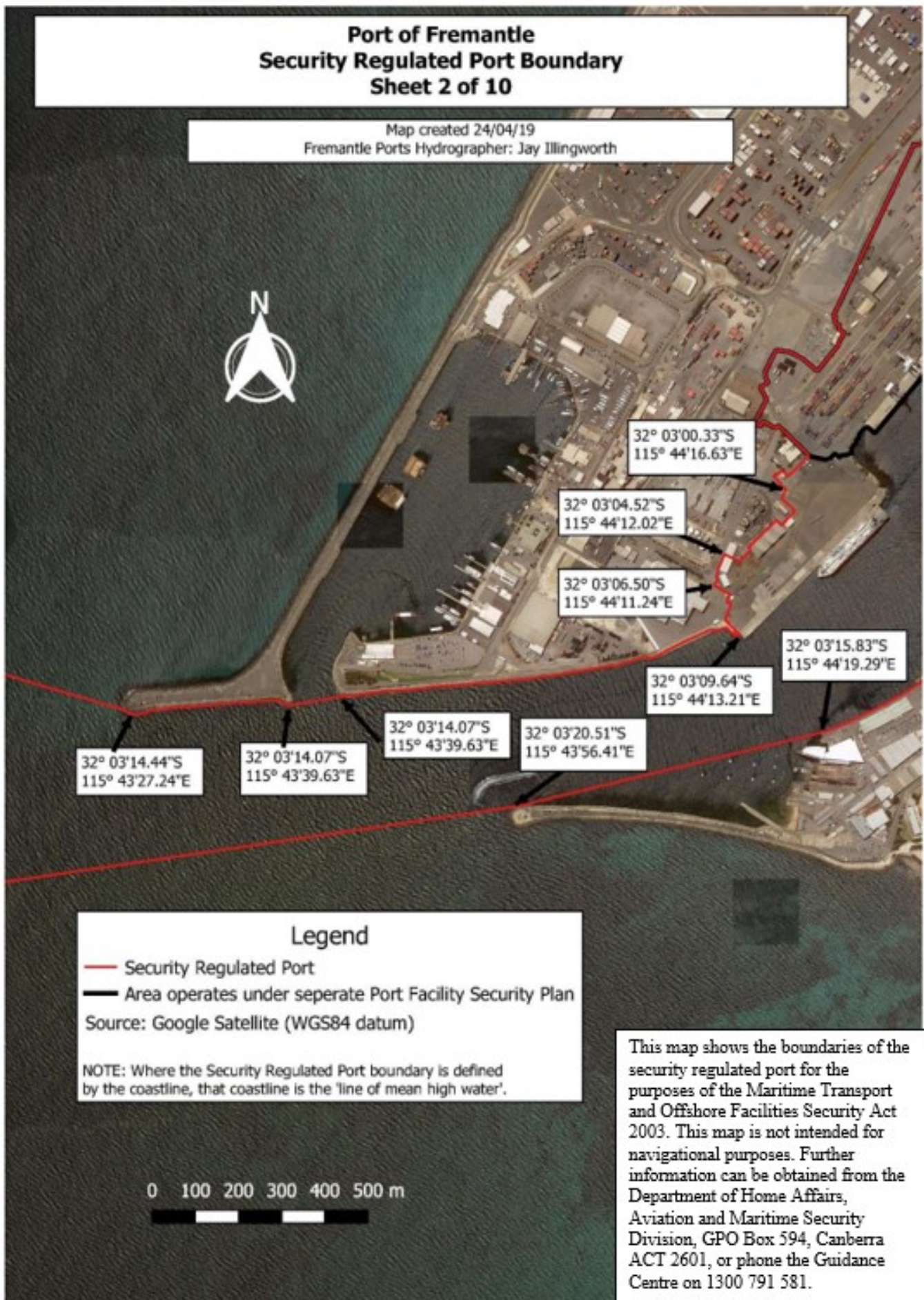
Daniel Panozzo
Assistant Director, Critical Infrastructure Regulatory Operations and Analysis
Cyber and Infrastructure Security Operations
Delegate of the Secretary of the
Department of Home Affairs

24 April 2023

Note:

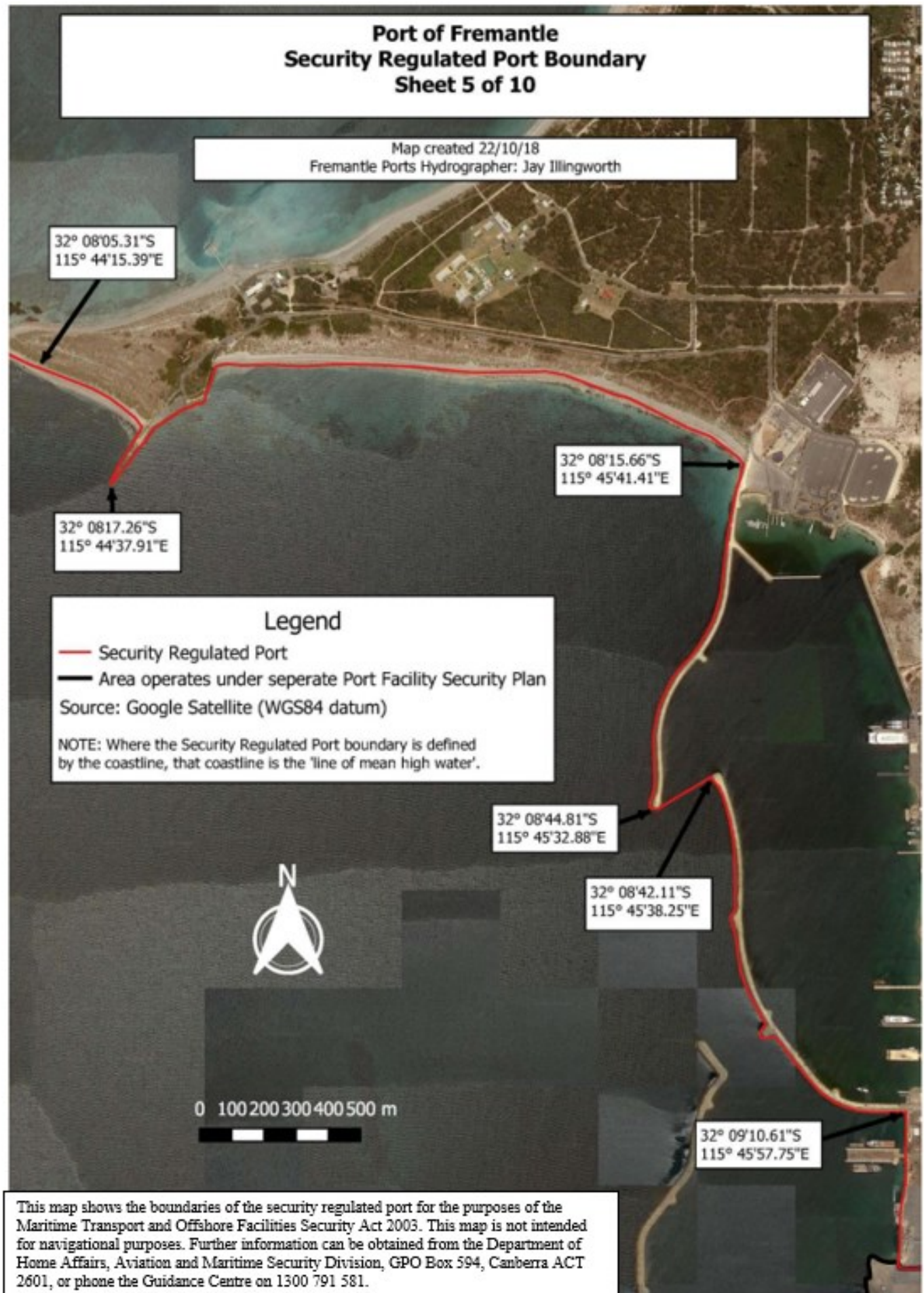
- 1) *Gazette* means the *Commonwealth of Australia Gazette*
- 2) This Notice remains in force until otherwise revoked in writing and upon subsequent publication in the *Gazette*

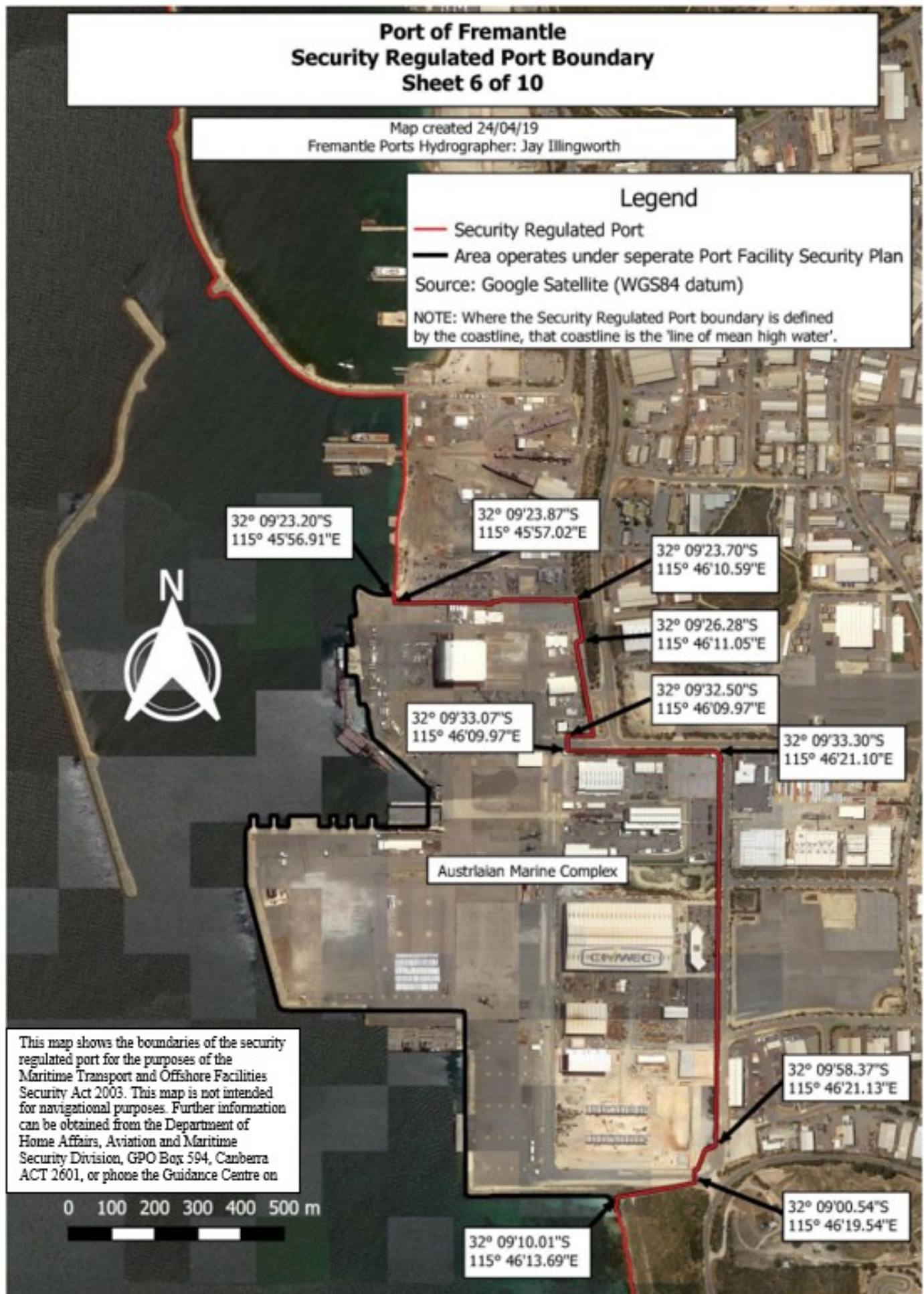


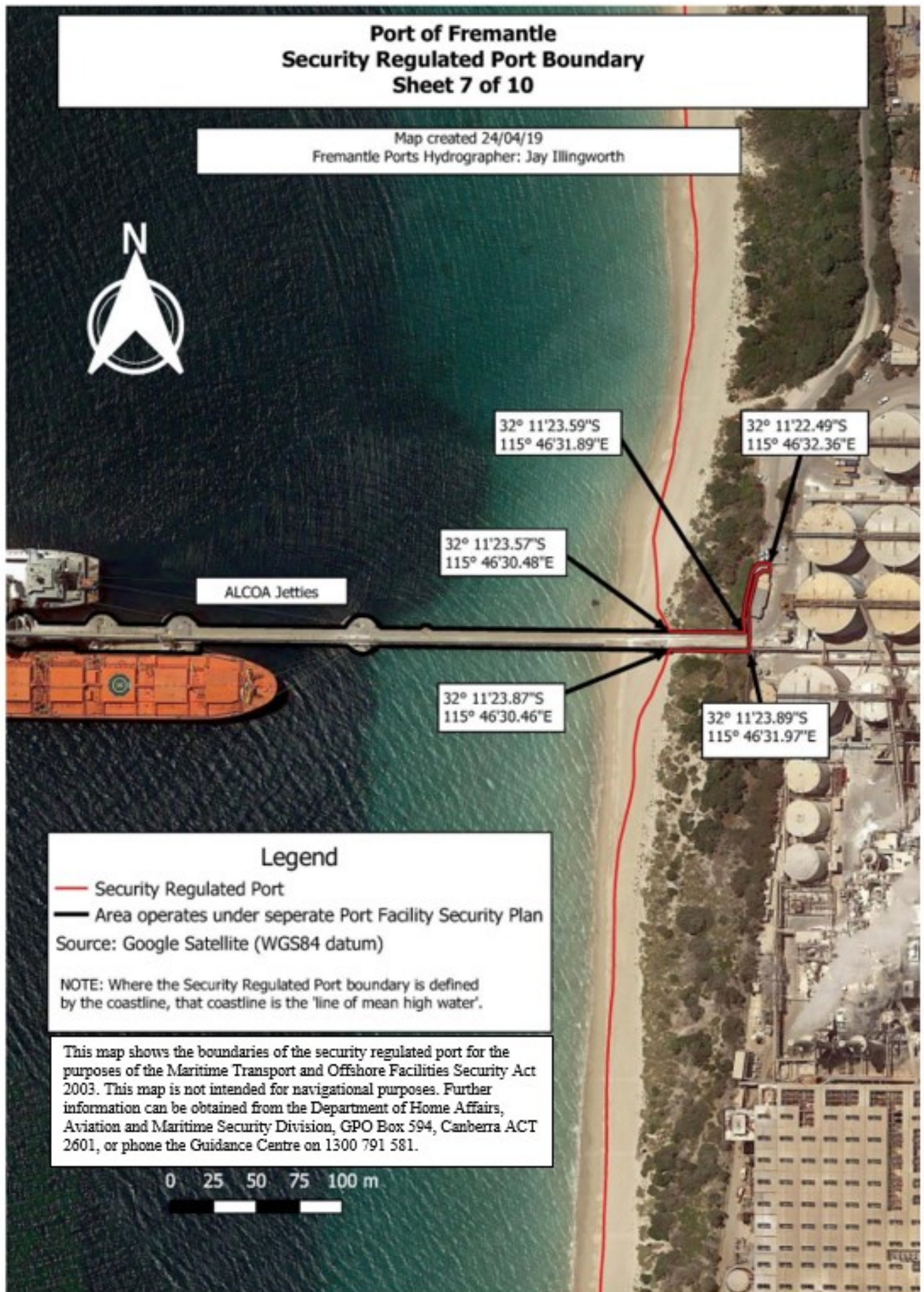












Port of Fremantle Security Regulated Port Boundary Sheet 8 of 10

Map created 09/02/21
Fremantle Ports Hydrographer: Jay Illingworth

This map shows the boundaries of the security regulated port for the purposes of the Maritime Transport and Offshore Facilities Security Act 2003. This map is not intended for navigational purposes. Further information can be obtained from the Department of Home Affairs, Aviation and Maritime Security Division, GPO Box 594, Canberra ACT 2601, or phone the Guidance Centre on 1300 791



32° 12'34.17"S
115° 46'02.85"E

Kwinana Bulk Terminal

32° 12'37.03"S
115° 46'14.60"E

32° 12'34.09"S
115° 46'32.11"E

32° 12'45.92"S
115° 46'13.97"E

32° 12'49.22"S
115° 46'13.31"E

32° 12'58.49"S
115° 45'45.86"E

32° 12'22.51"S
115° 46'35.52"E

Legend

— Security Regulated Port

Source: Google Satellite (WGS84 datum)

NOTE: Where the Security Regulated Port boundary is defined by the coastline, that coastline is the 'line of mean high water'.

0 100 200 300 400 500 m

32° 13'22.51"S
115° 46'35.52"E

